

Revolutionize the union of
design and technology

1

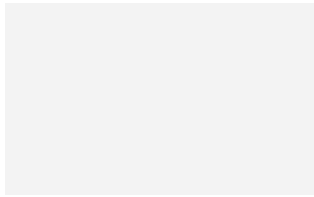
2

3

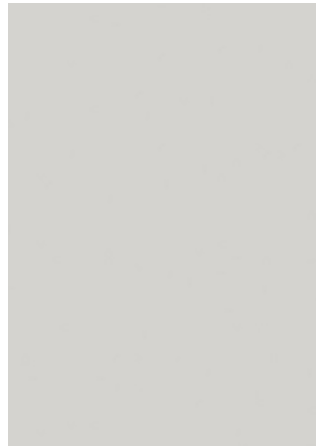
- ⓘ Not recommended for use on compound curved surfaces
- NEW New design
- H A product number ending in "H" indicates horizontal grain direction

- 🖨️ Pattern is large scale; view full pattern width image at 3M.com/AMD
- 👁️ Available in AR Series; see page 48 for visual appearance
- 👁️ Available in EX Series; see page 49 for visual appearance

Smooth Metal



VM-1855MT ⓘ NEW



VM-1990MT ⓘ NEW



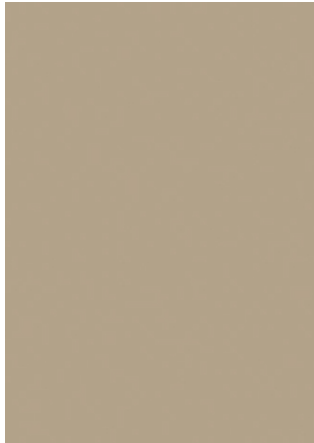
VM-1856MT ⓘ NEW



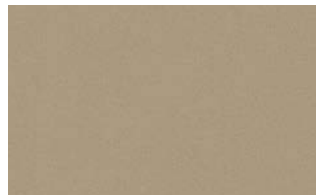
VM-1858MT ⓘ NEW



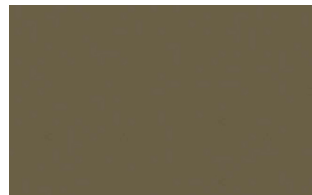
VM-1991MT ⓘ NEW



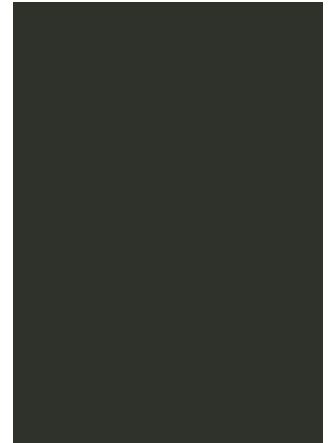
VM-1859MT ⓘ NEW



VM-1860MT ⓘ NEW



VM-1861MT ⓘ NEW



VM-1862MT ⓘ NEW

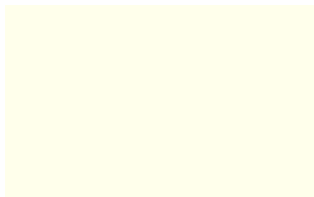
A

B

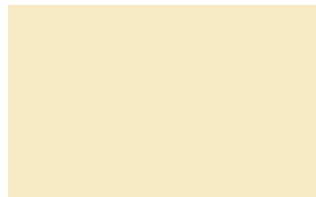
C

D

Solid Color



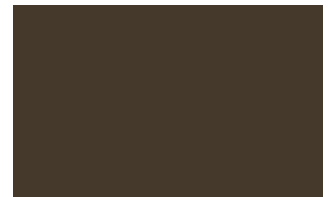
PS-1904MT ⓘ NEW



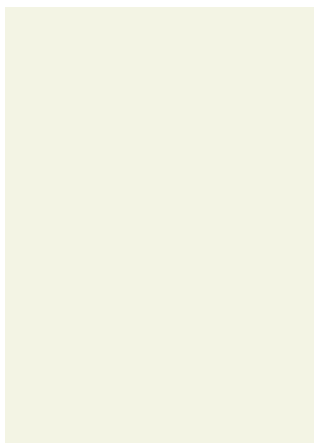
PS-1864MT ⓘ NEW



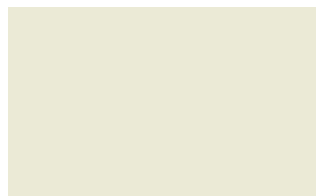
PS-1863MT ⓘ NEW



PS-1867MT ⓘ NEW



PS-1989MT ⓘ NEW



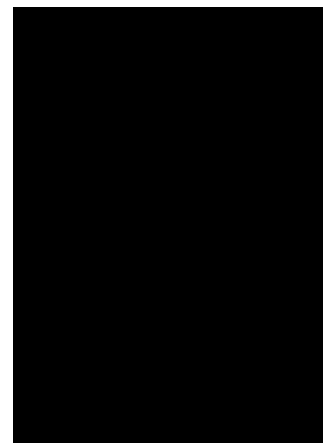
PS-1865MT ⓘ NEW



PS-1866MT ⓘ NEW



PS-1869MT ⓘ NEW



PS-1870MT ⓘ NEW

E

F

G

Smooth Mortar

A

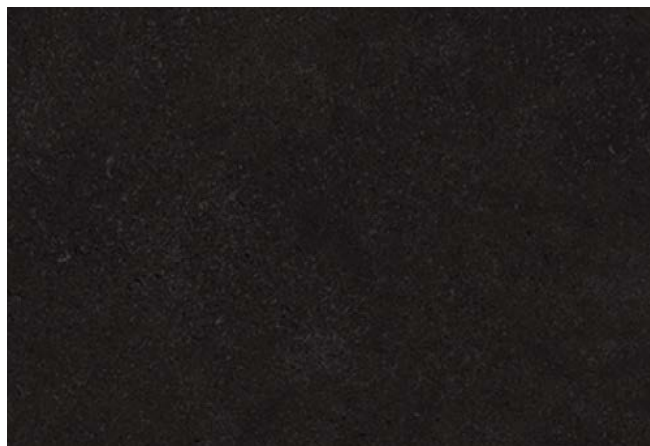


AE-1917MT NEW

B



AE-1913MT NEW



AE-1921MT NEW

C

Industrial Texture

D



AE-1959MT NEW



AE-1880MT NEW

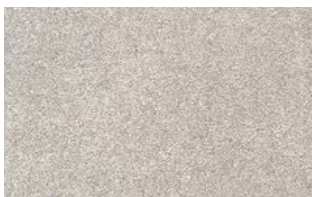


AE-1931MT NEW



AE-1960MT NEW

E

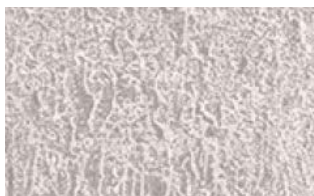


AE-1930MT NEW



AE-1932MT NEW

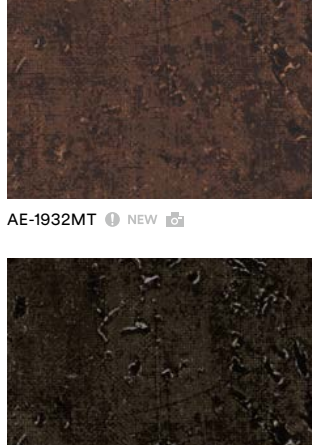
F



AE-1928MT NEW



AE-1926MT NEW

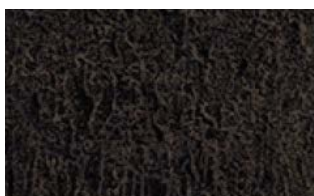


AE-1933MT NEW



AE-1944MT NEW

G



AE-1929MT NEW

- ⓘ Not recommended for use on compound curved surfaces
- NEW New design
- H A product number ending in "H" indicates horizontal grain direction

- 📷 Pattern is large scale; view full pattern width image at 3M.com/AMD
- AR Available in AR Series; see page 48 for visual appearance
- EX Available in EX Series; see page 49 for visual appearance

Smooth Stone



ST-1914MT ⓘ NEW 📷



ST-1919MT ⓘ NEW 📷



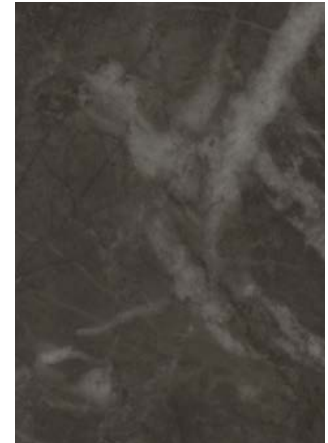
ST-1911MT ⓘ NEW



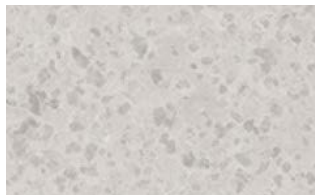
ST-1916MT ⓘ NEW



ST-1915MT ⓘ NEW



ST-1920MT ⓘ NEW 📷



ST-1918MT ⓘ NEW



ST-1912MT ⓘ NEW



ST-1927MT ⓘ NEW 📷

A

B

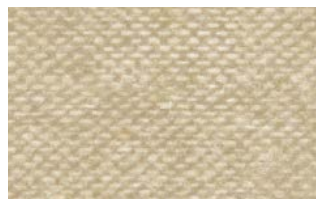
C

D

Textile



NU-1934MT ⓘ NEW



NU-1938MT ⓘ NEW



NU-1942MT ⓘ NEW



NU-1943MT ⓘ NEW



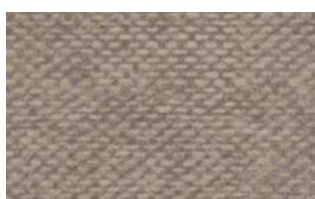
NU-1940MT ⓘ NEW



NU-1941MT ⓘ NEW



NU-1936MT ⓘ NEW



NU-1935MT ⓘ NEW



NU-1939MT ⓘ NEW



NU-1937MT ⓘ NEW

E

F

G